

www.senlogicindia.com


Senlogic

Vibrant Validation

SENLOGIC

THE VIBRANT VALIDATION

www.senlogic.org

The new
**Weighing
Concept**



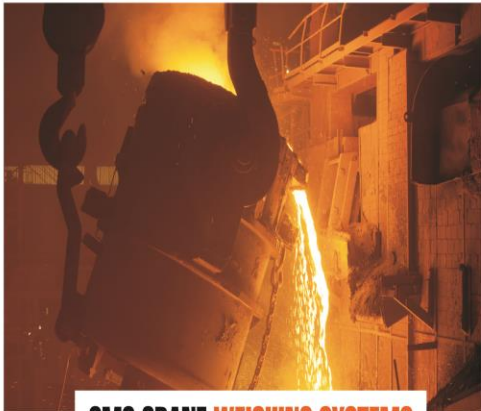
Certificate No. FM 92790 ISO 9001:2000

VEI
Weighing made easy

Senlogic
Automation
We Weigh the world

**Indo Italian Product
Rail Inmotion weighing System**

**WE WELCOME ALL DELEGATES TO
HAVE INTERACTION SESSION ON
Torpedo weighing**



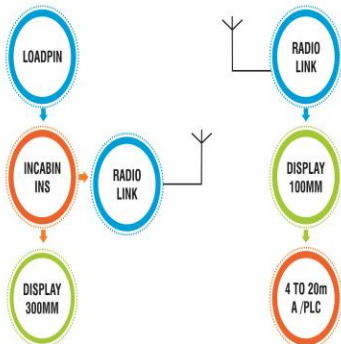
SMS CRANE WEIGHING SYSTEMS

KEY FEATURES :

- ▶ Customized Design for High Temp Application
- ▶ Versatile Installation –Rope Drum/On Hook/Operator car
- ▶ Absolute Encoder for Rope Compensation
- ▶ Menu Driven Operation
- ▶ Digital Calibration
- ▶ Wireless remote Weight Transmission

SPECIFICATION

Design	: Load Cell/Load pin
Capacity	: Up to 300 ton
Resolution	: 100Kg/User Selectable
Controller	: ARM Based
Memory	: in built with RTC
Communication	: RF/ Zig Bee
Input/output	: Digital /Analog 4-20mA
Software	: dot Net/MS Access/SQL



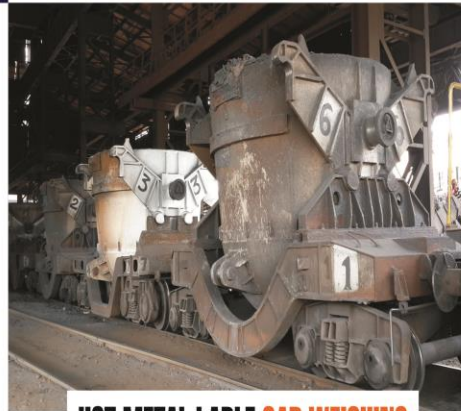
TORPEDO LADLE CAR WEIGHING

KEY FEATURES :

- ▶ Customized Design for On/Off Pit Tilting
- ▶ Simple to install without major shutdown
- ▶ Very minimal civil works
- ▶ Handle different Type of Torpedo Cars
- ▶ Can Weigh Multiple Axle Configuration
- ▶ Menu Driven Operation
- ▶ Digital Calibration
- ▶ Customized Host Interface

SPECIFICATION

Design	: Pit Less
Capacity	: Up to 800 ton
Resolution	: 100Kg/User Selectable
Controller	: ARM Based
Memory	: in built with RTC
Communication	: RS 232/RS 485/Profibus/Modbus/RF/
Input/output	: Digital /Analog 4-20mA
Software	: dot Net/MS Access/SQL



HOT METAL LADLE CAR WEIGHING

KEY FEATURES :

- ▶ Customized Design for critical environment
- ▶ Simple to install without major shutdown
- ▶ Very minimal civil works
- ▶ Handle different Type of Ladle Cars
- ▶ Can Weigh Multiple Axle Configuration
- ▶ Menu Driven Operation
- ▶ Digital Calibration
- ▶ Customized Host Interface

SPECIFICATION

Design	: Pit Less
Capacity	: Up to 300 ton
Resolution	: 100Kg/User Selectable
Controller	: ARM Based
Memory	: in built with RTC
Communication	: RS 232/RS 485/Profibus/Modbus/RF/
Input/output	: Digital /Analog 4-20mA
Software	: dot Net/MS Access/SQL



ON LINE HOT BILLET WEIGHING

KEY FEATURES :

- ▶ Customized Design –Hydraulic/Pneumatic Lifting
- ▶ Simple to install without major shutdown
- ▶ Very minimal civil works
- ▶ Handle different Billet Sizes
- ▶ Billet in position through Light barriers
- ▶ Temperature compensated Load cells up to 250 deg c
- ▶ Menu Driven Operation
- ▶ Digital Calibration
- ▶ Customized Host Interface

SPECIFICATION

Design	: Weigh Frame Suitable for Roller table
Capacity	: up to 100 ton Programmable
Resolution	: 1/ 2/5/10-Kg User Selectable
Zero/Tare	: Auto Zero/Auto tare
Controller	: SAM 3X/ARM controller
Memory	: in built with RTC
Communication	: RS 232/RS 485/Profibus/Modbus/RF/
Input/output	: Digital /Analog 4-20mA
Software	: dot Net/MS Access/SQL



RAIL COACH AND ENGINE WEIGHING APPLICATION



SENLOGIC IS HAVING RANGE OF PRODUCT FOR THE STEEL INDUSTRIES

High temperature SMS crane weighing with full functional Radio connectivity with PLC integration .

On line billet weighing system

High temperature RDM based 800 ton Torpedo

Coil car weighing and Automation system

PRODUCT CONTINUED

Mobirail based 300 ton ladle car weighing system.

Hot Bar weighing system

High temperature RDM based Tapping car weighing

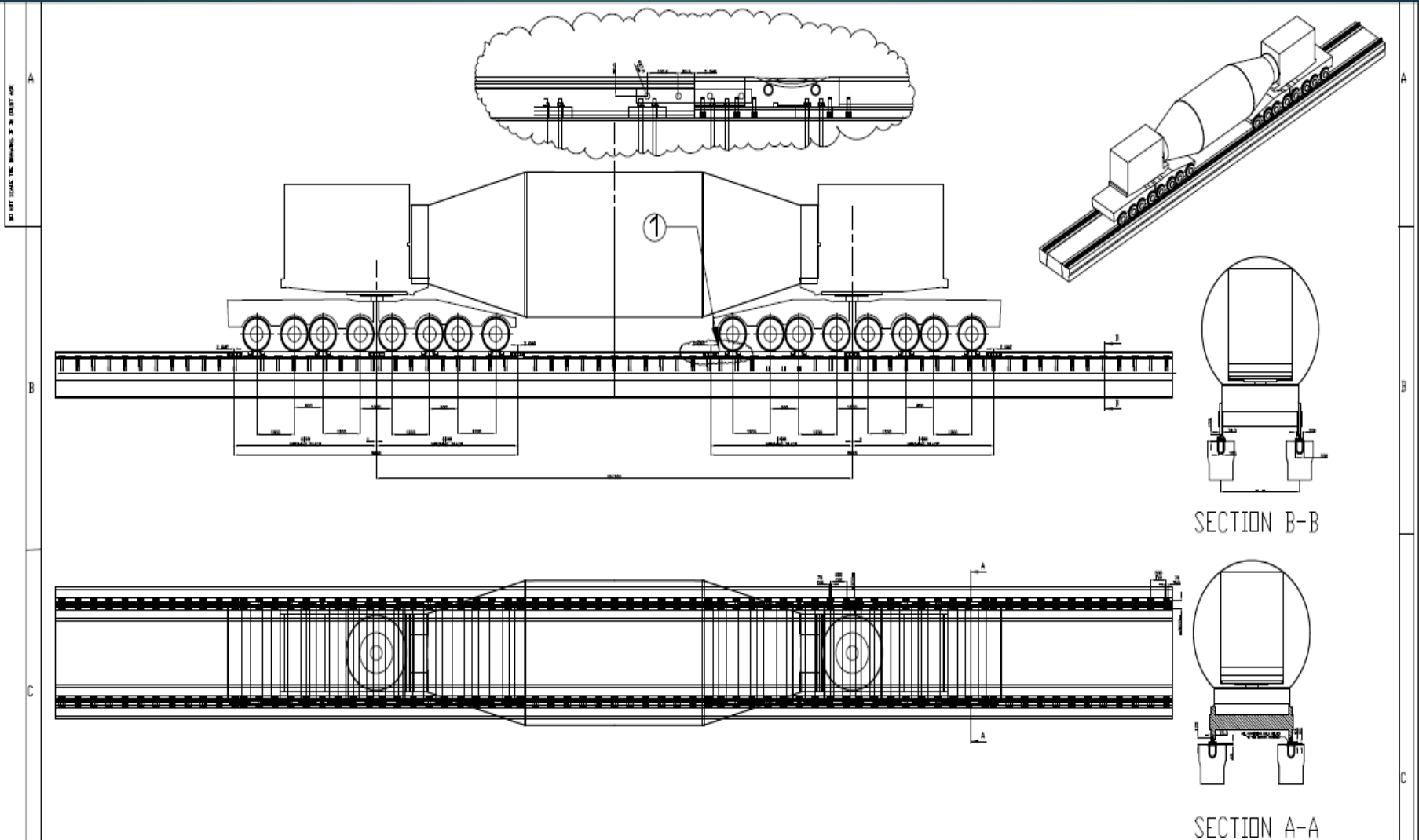
High temperature loadcell and INDICATOR

Wireless based Tundiesh and turret weighing system

Pusher car weighing with Remote access of the weighing and data through RF modem.

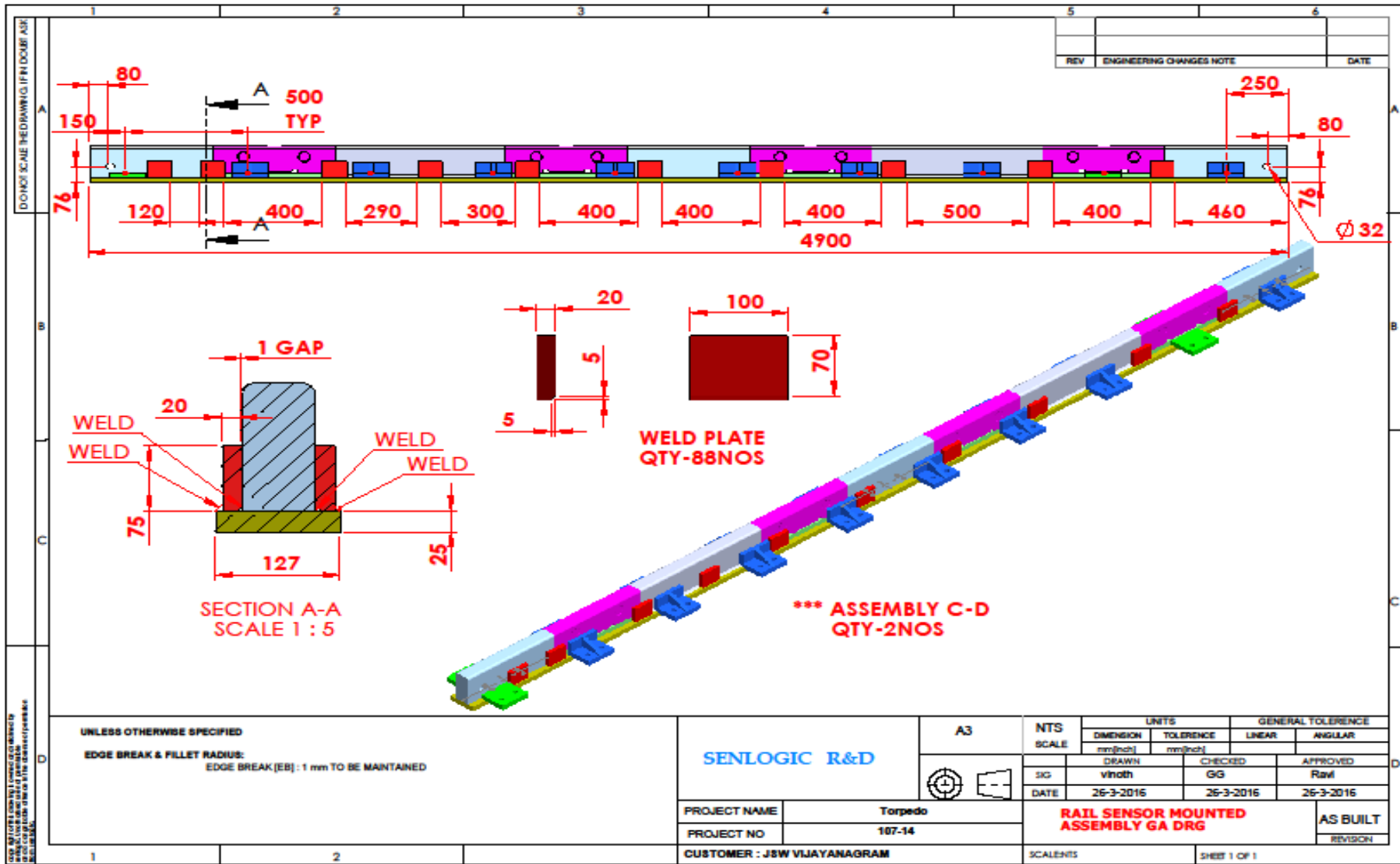
Ladle car in motion weighing system .

RDM BASED TARPEDO WEIGHING

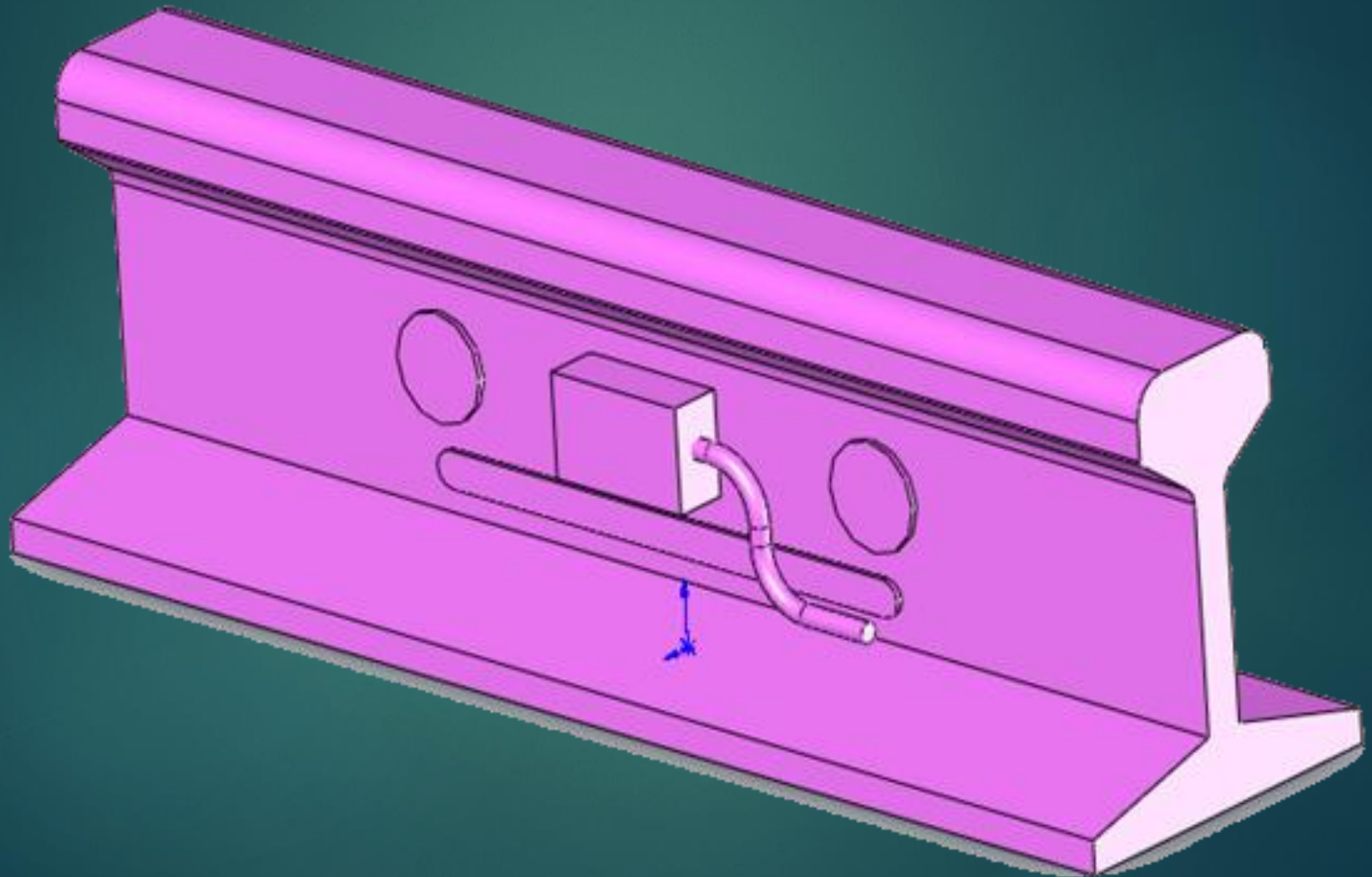


BILL OF MATERIALS				
ITEM NO	PART NO	DESCRIPTION	QTY	REMARKS

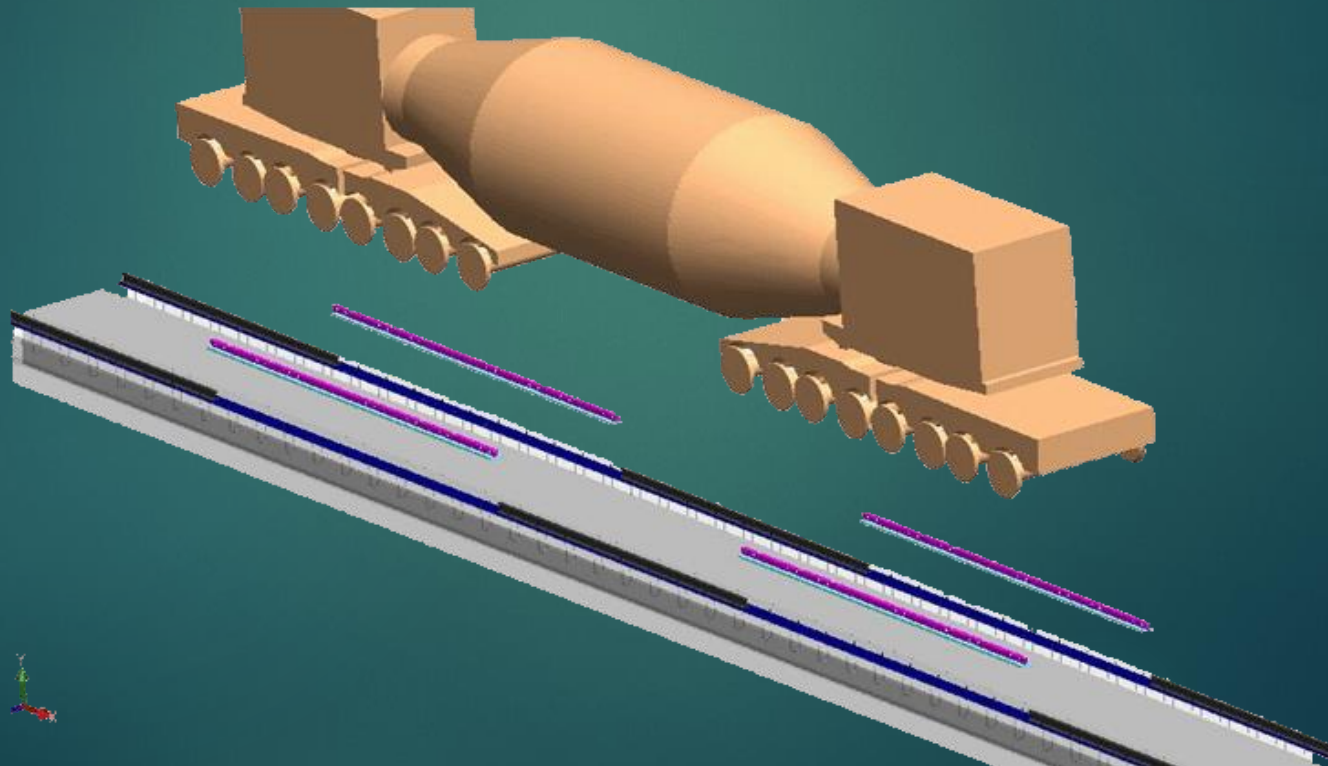
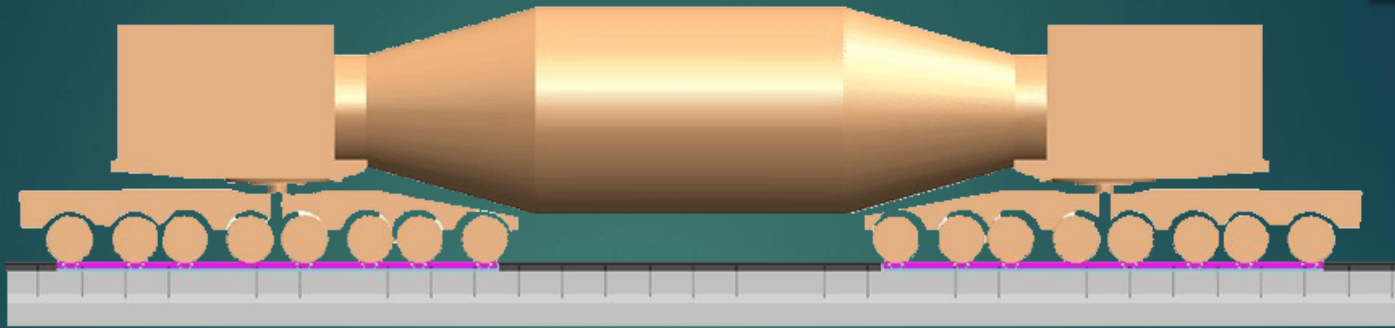
TARPEDO AS BUILT



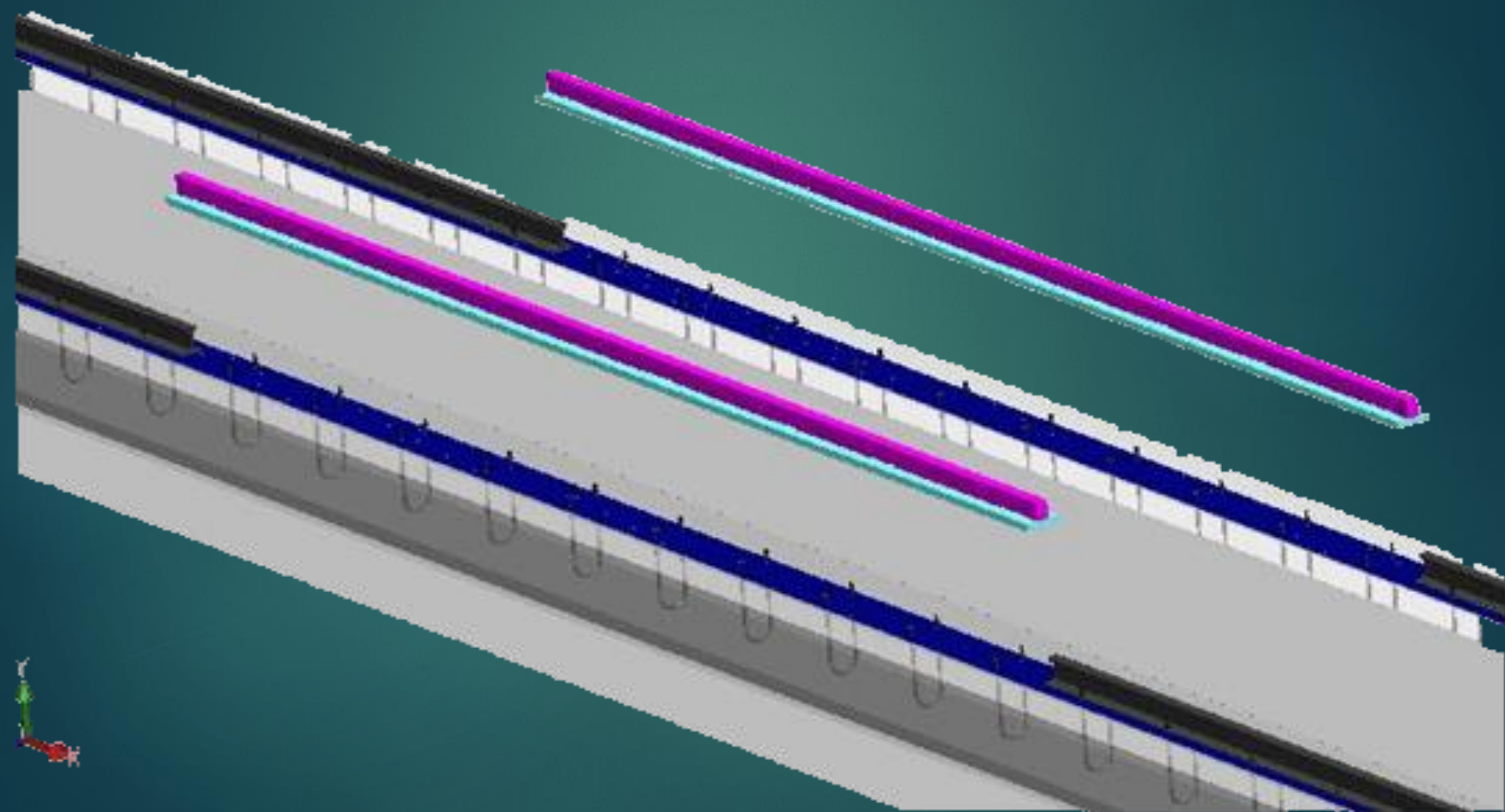
RDM LOAD CELL



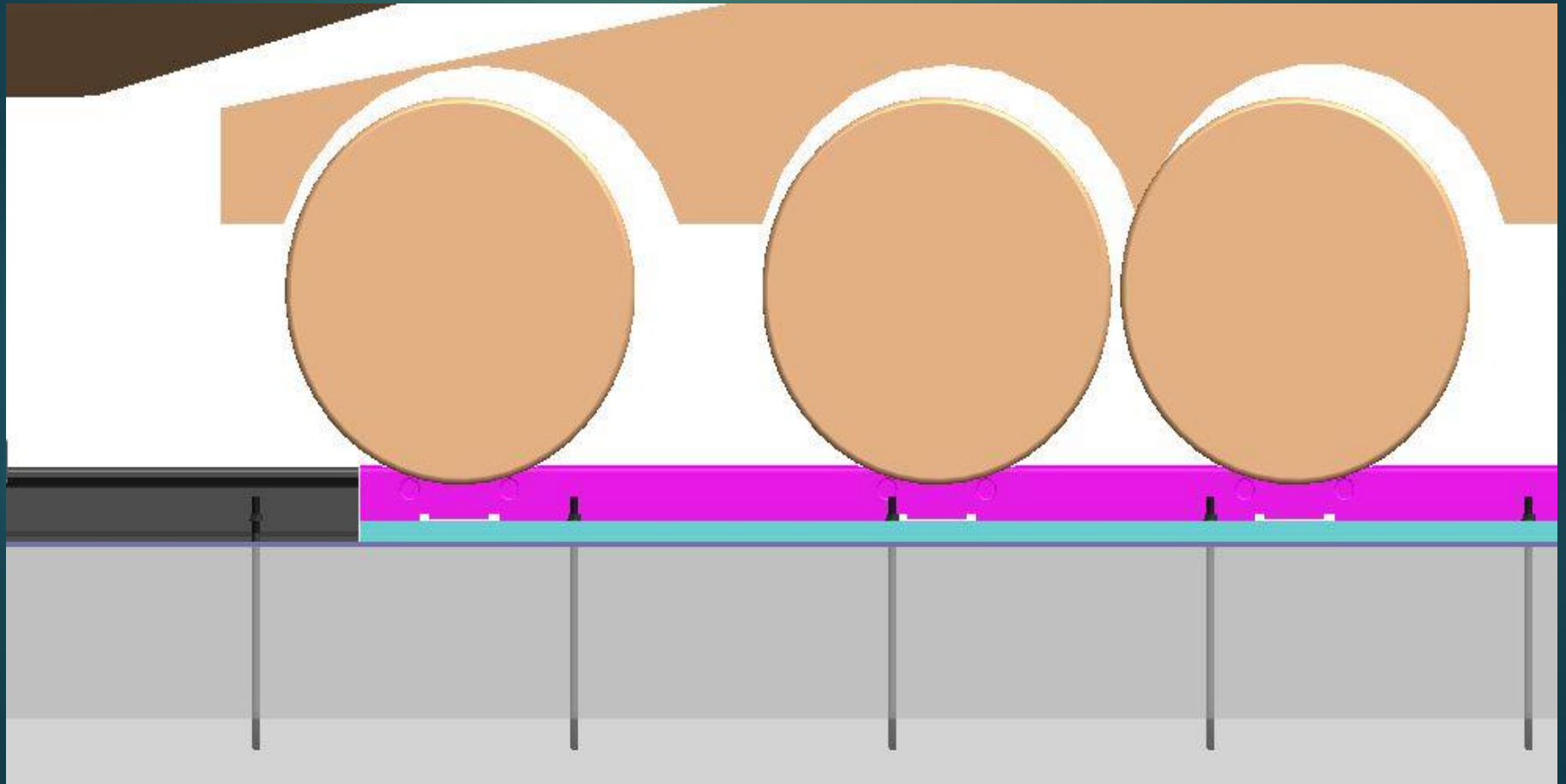
TORPEDO LAYOUT & EXPLODED VIEW



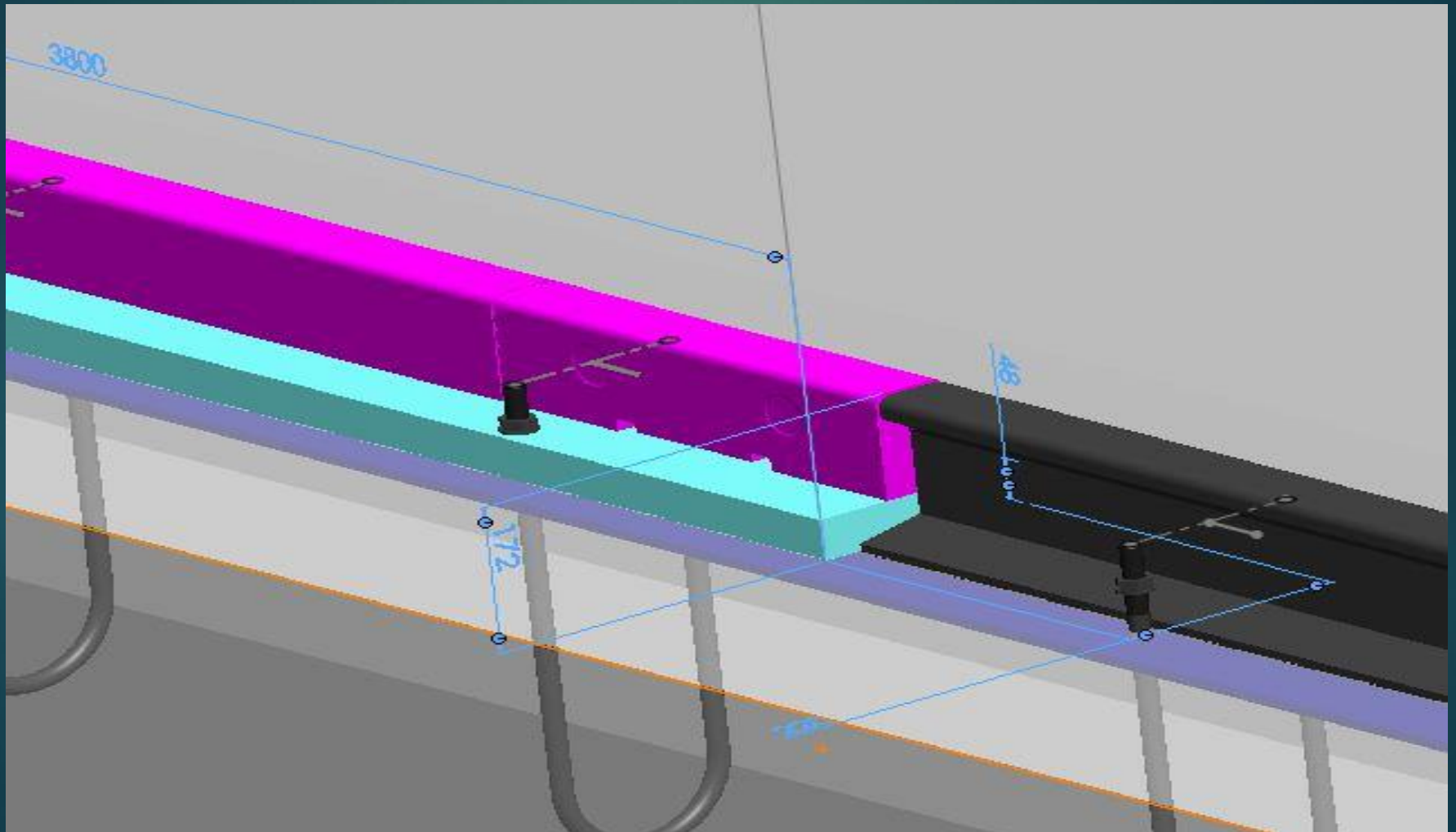
BOGIE EXPLODED VIEW



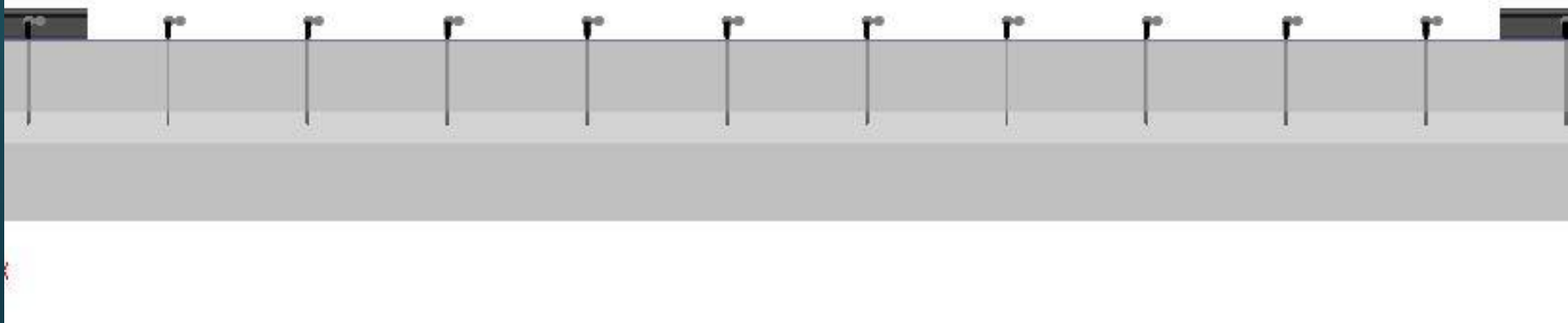
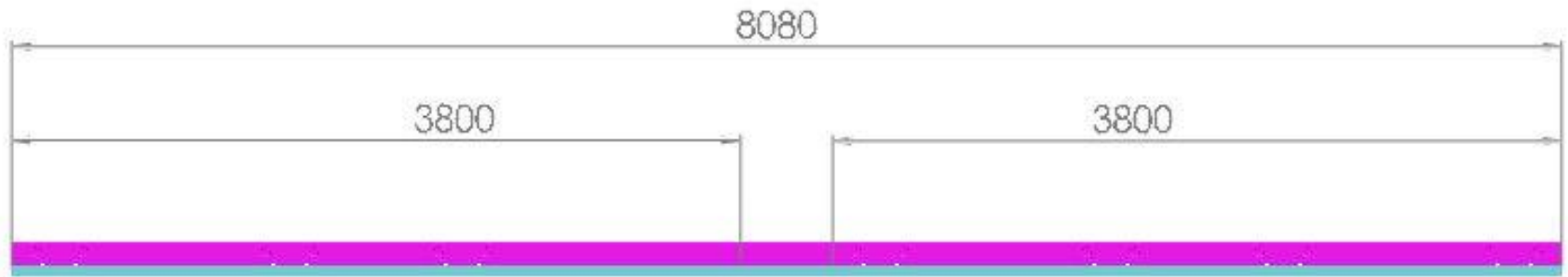
WHEEL POSITION



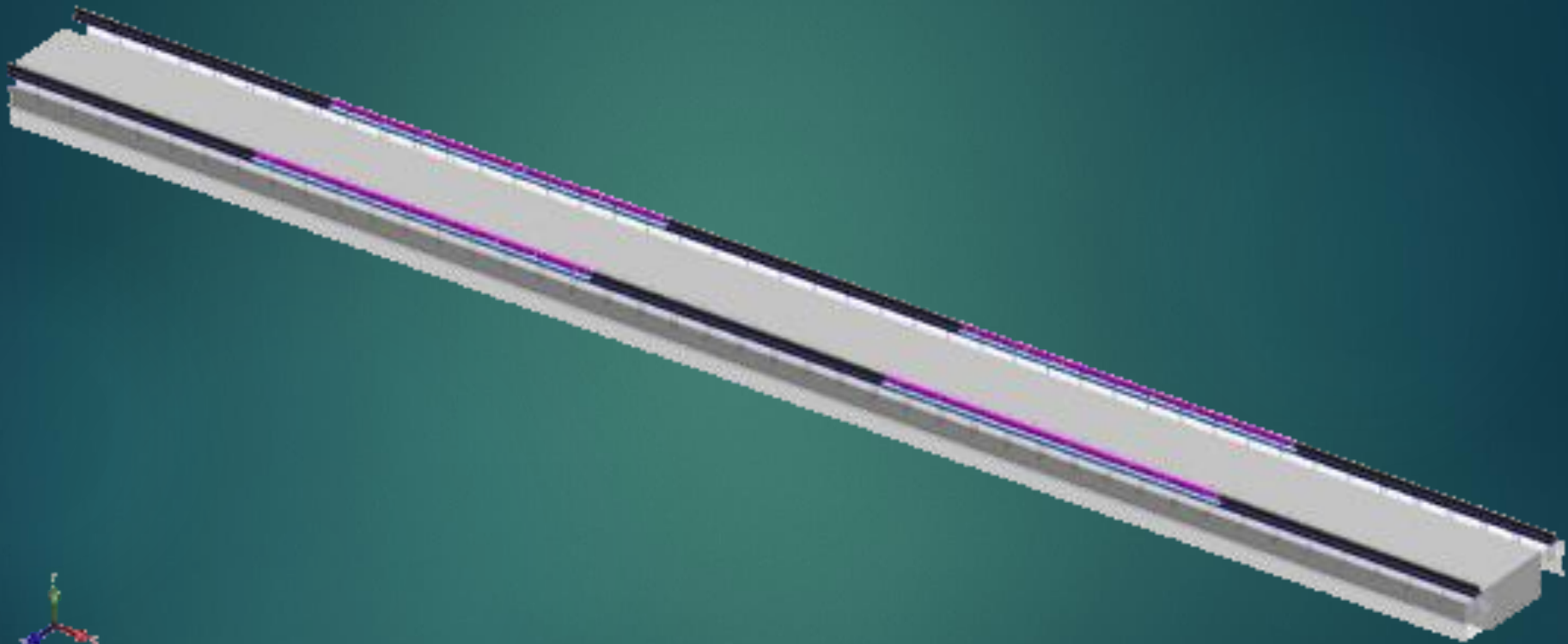
ANCHORING



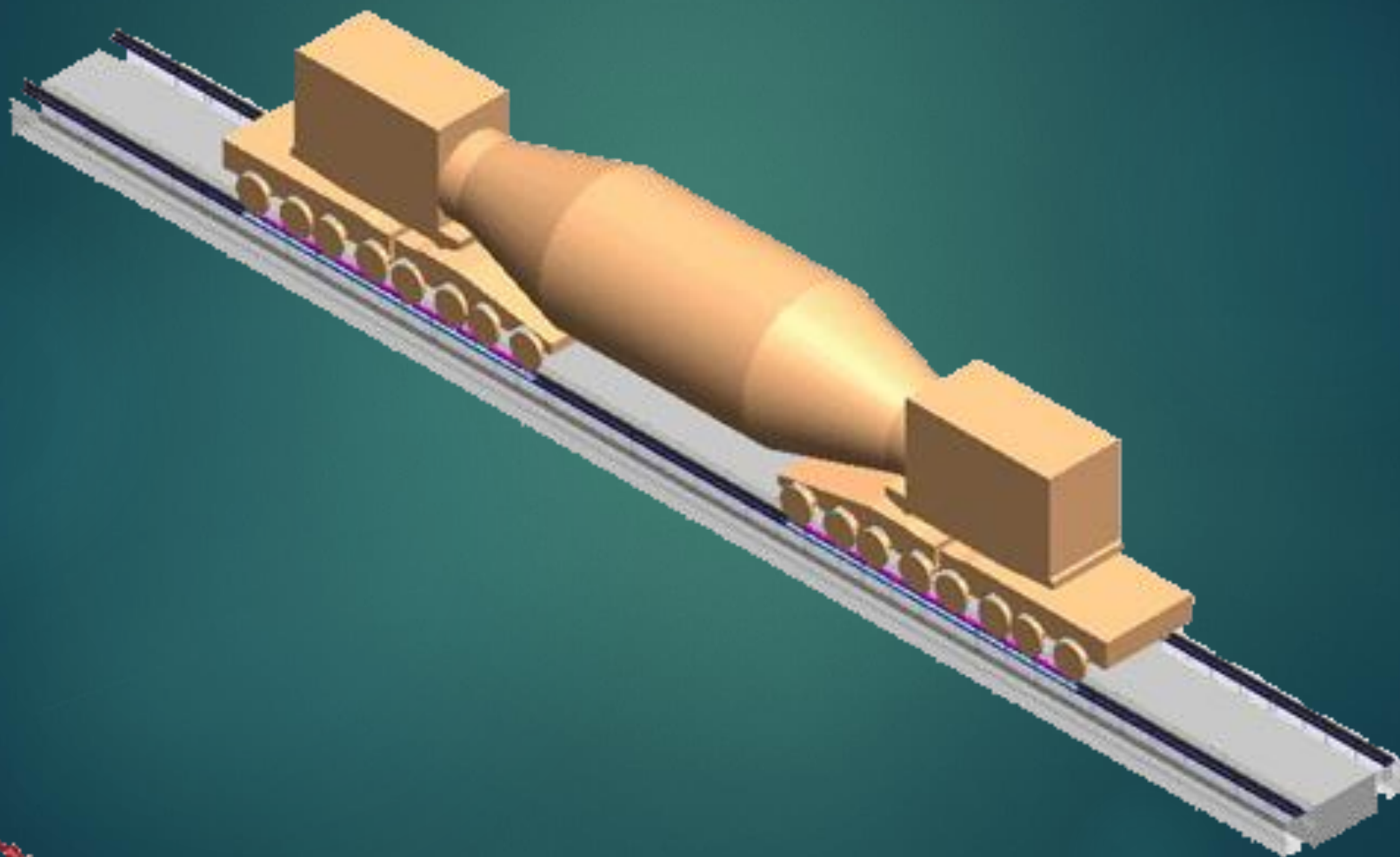
WEIGH BAR LENGTH FOR RIGHT SIDE BOGIE

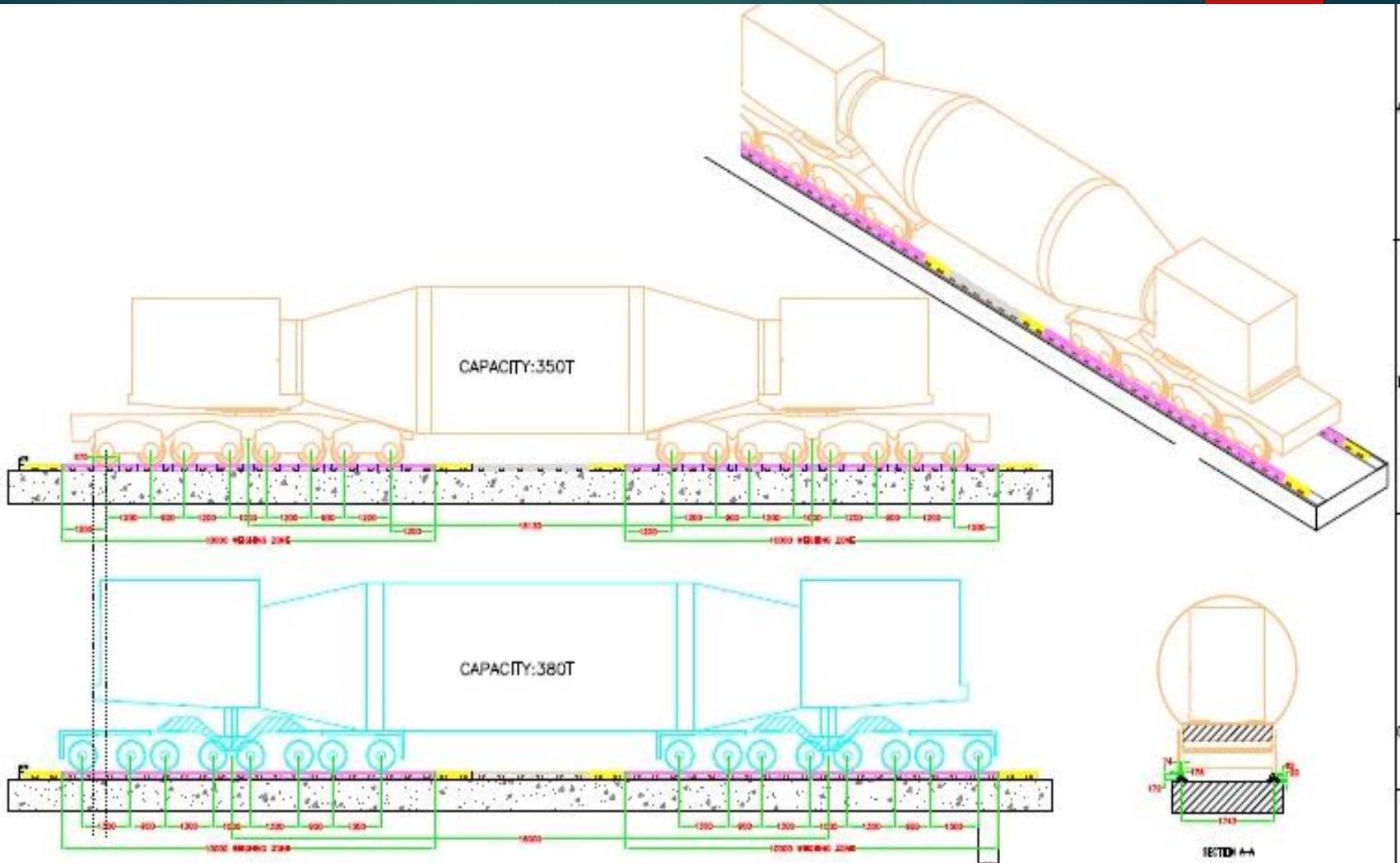


WEIGH BAR LOCATION



FULL VIEW OF THE TORPEDO WEIGHING





ALL THE DIMENSION ARE IN MM

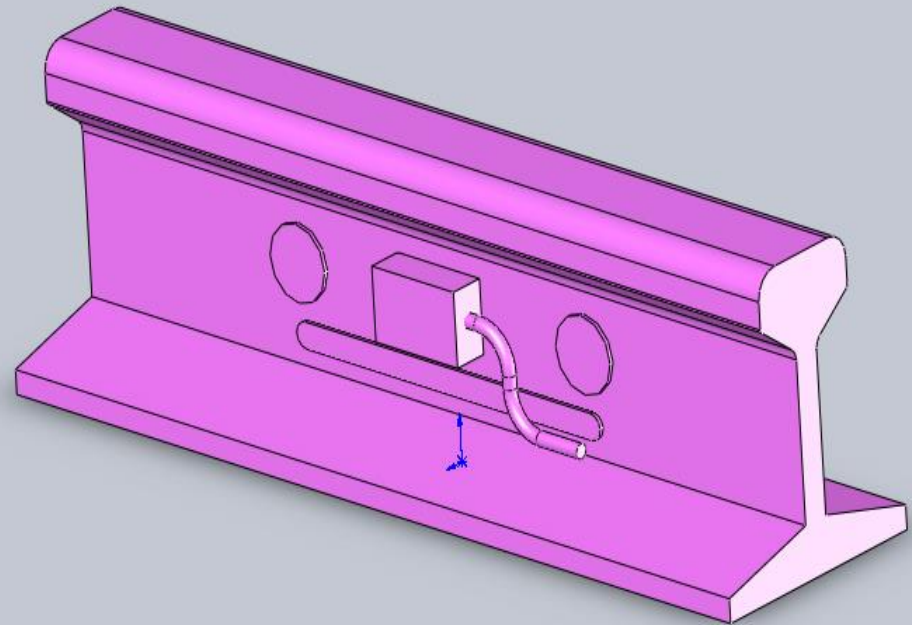
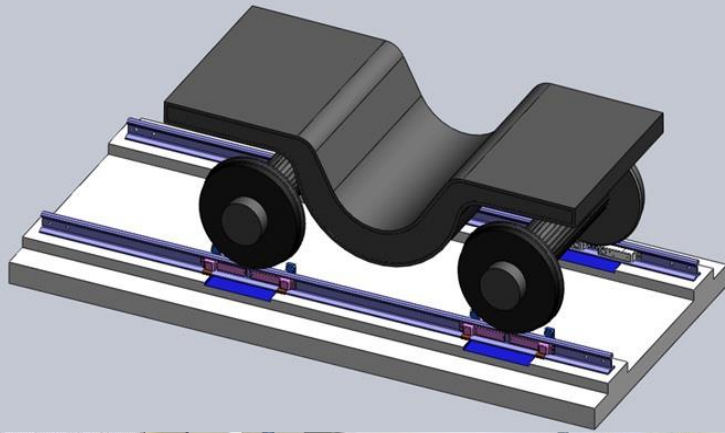
SENLOGIC AUTOMATION (P) LTD CHENNAI-600087		A3	UNITS		GENERAL TOLERANCE	
			MM	SCALE	LINEAR	ANGULAR
CUSTOMER	JSW STEEL	DRAWN	DATE	CHECKED	APPROVED	
			24-06-2006	24-06-2006	RAVI	
PROJECT NO		DATE	24-06-2006	24-06-2006	24-06-2006	
PROJECT REF		TITLE : TBM WELDING SYSTEM			00	
		DRG NO / VOL			SHEET : OF 1	
					SCALE: NTS	

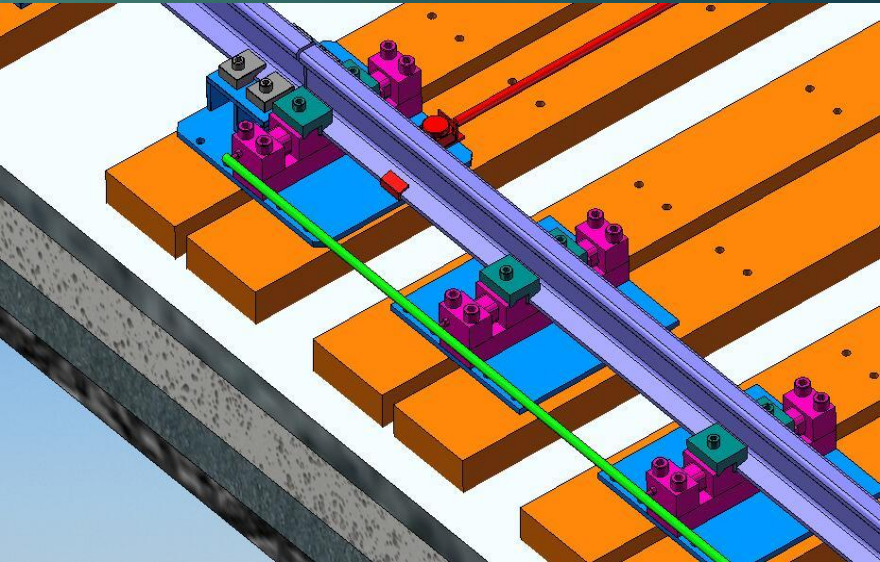
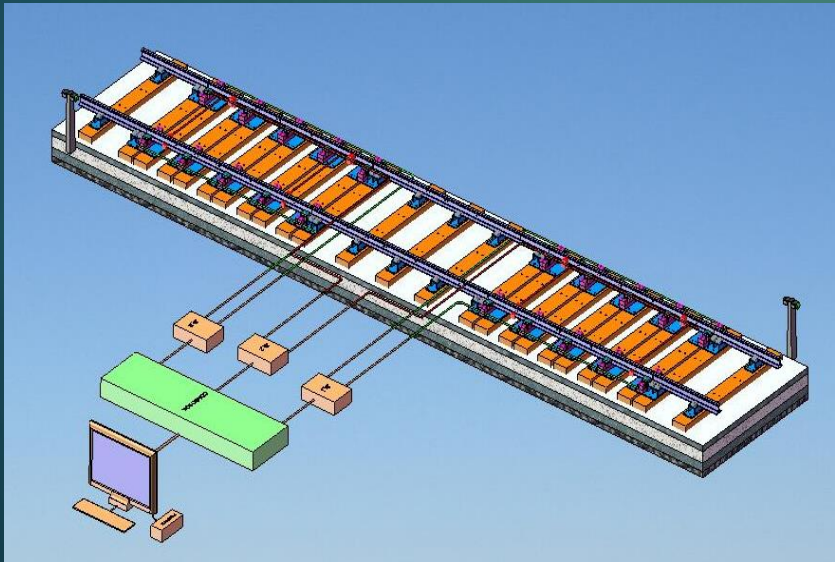
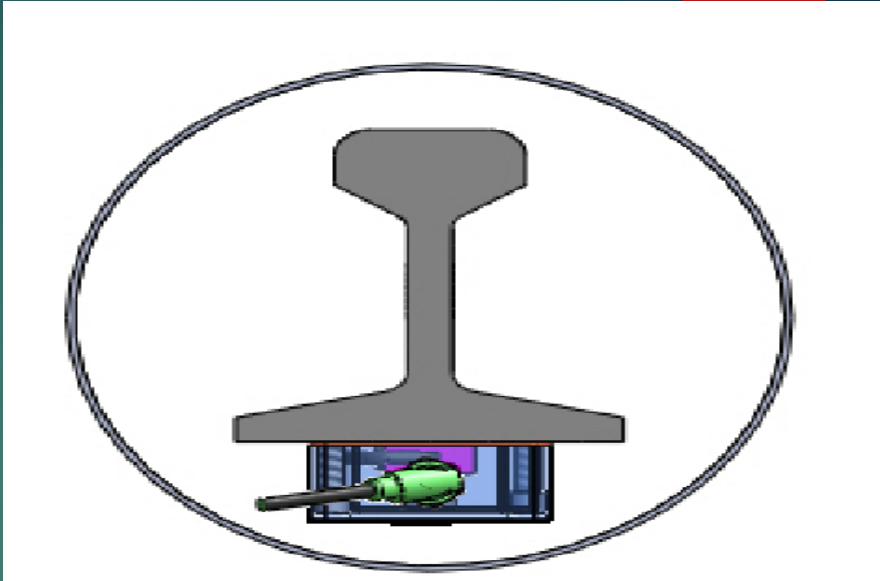
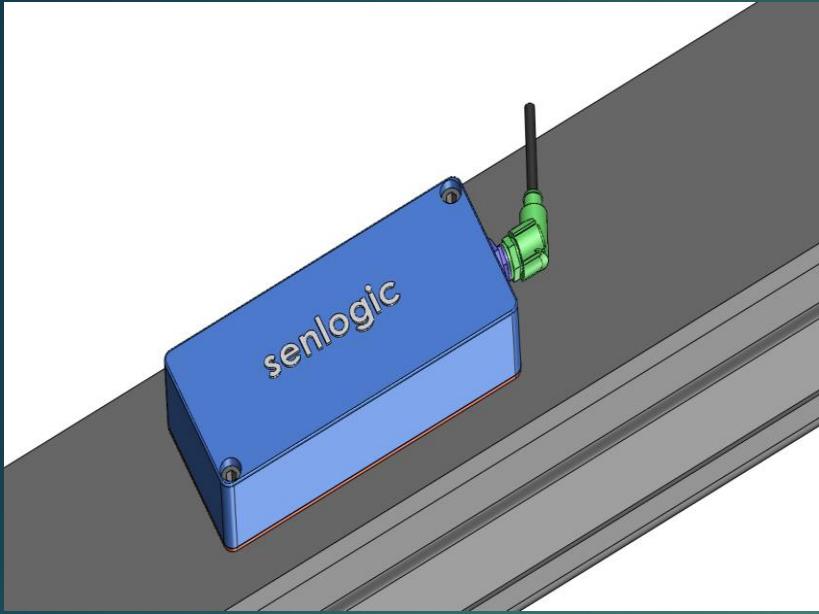
1

2

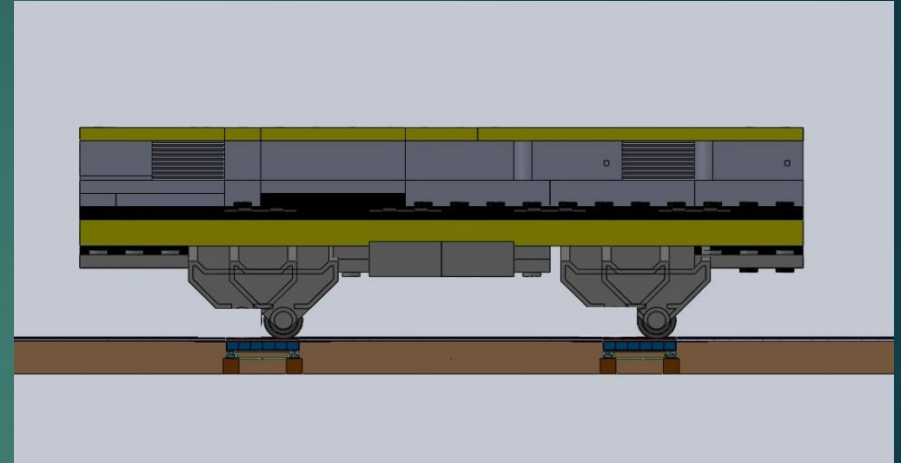
D

PRODUCT GALLERY

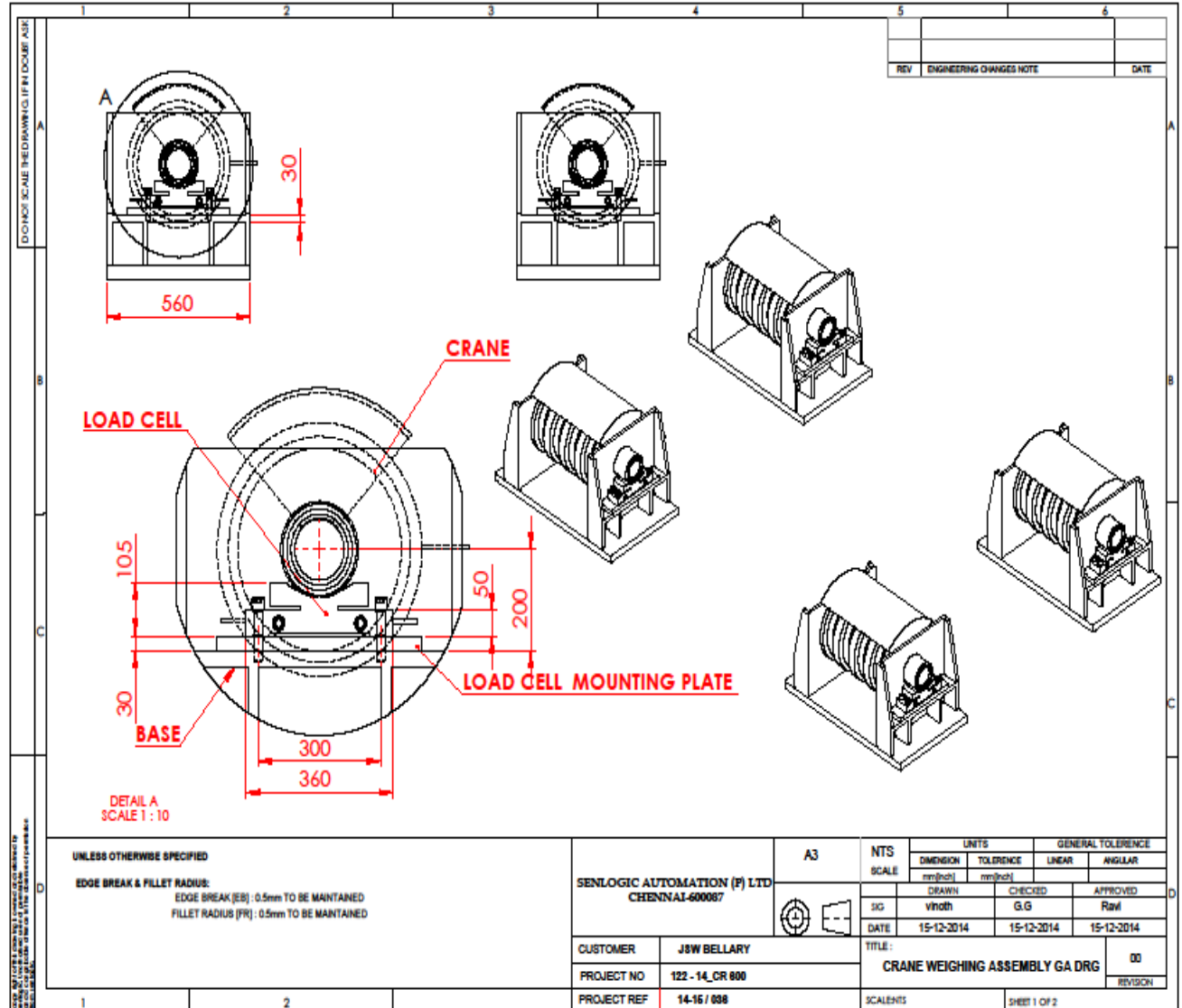
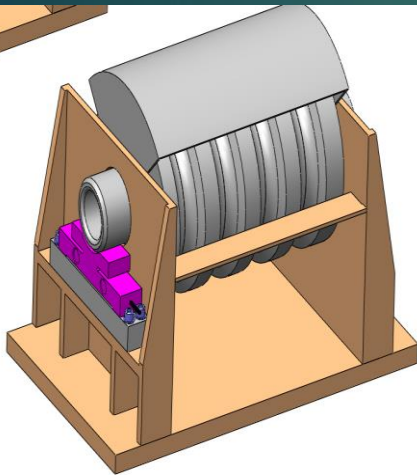




LADLE CAR PUSHER CAR



CRANE WEIGHING



ON BOARD LADLE CAR WEIGHING



NEW REQUIREMENT

The System should weighing both the 380 and 350 ton Torpedo ladle car .

The system should have comfortable weigh Zone of at least 10mts on either side so that the Difference in Torpedoes dimension can be accommodated .

System should have Digital loadcell , high Temperature and on line fault deduction system so that any one of the loadcell problem can be deducted and by passed .

Complete torpedo loading and drop in weighing application has to be developed and it should be proven source .

The Rail sensor should have small piece , must have minimum length of 5000mm.

SENLOGIC SOLUTION

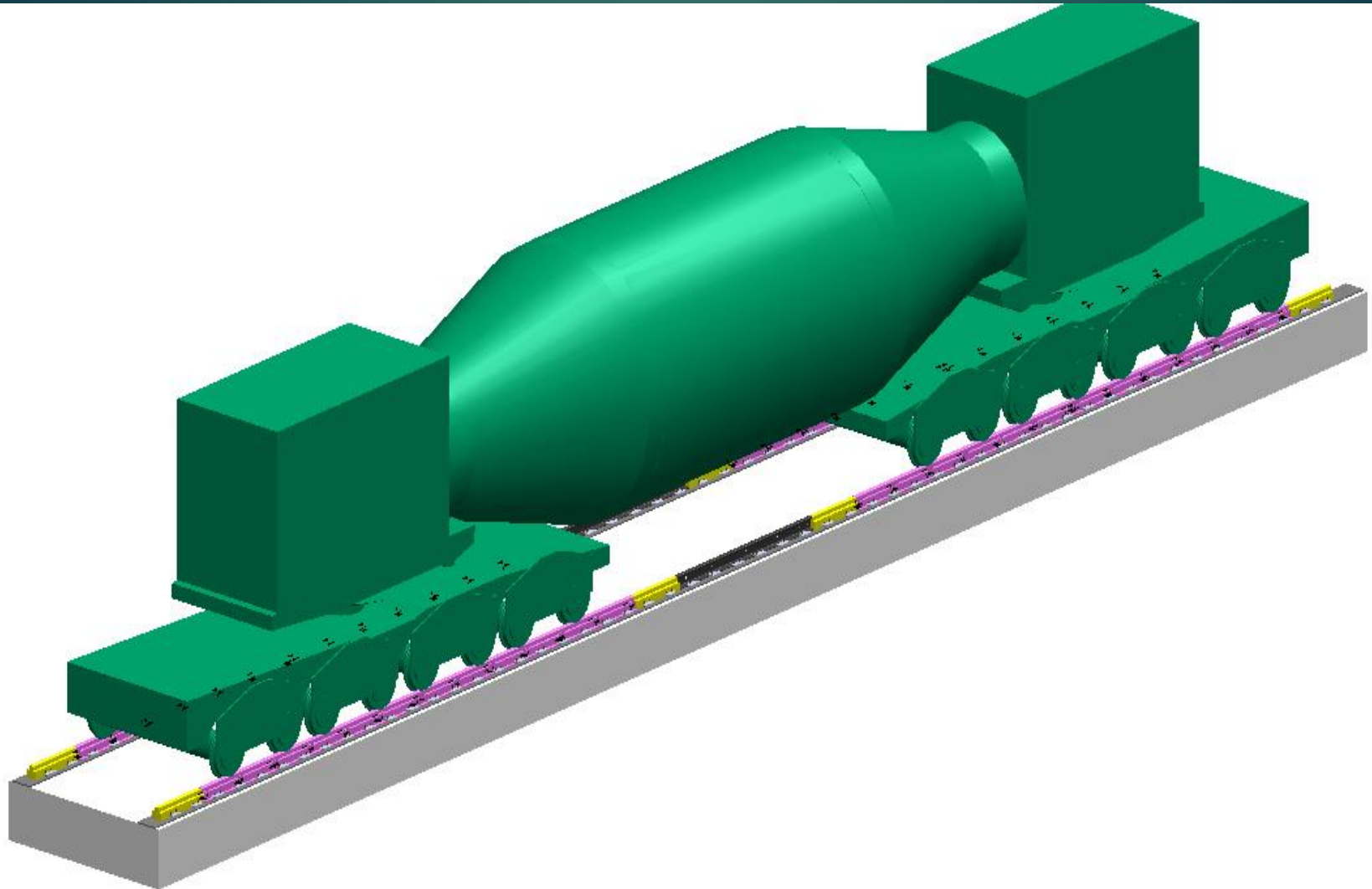
We at senlogic with years of experience we here by suggesting you to go for our DYNAPLUS loadcell .

The DYNAPLUS is the Full sense weighing sensor case cadable to any length with no of digital or analog load sensing element to meet the Rail gauge requirement .

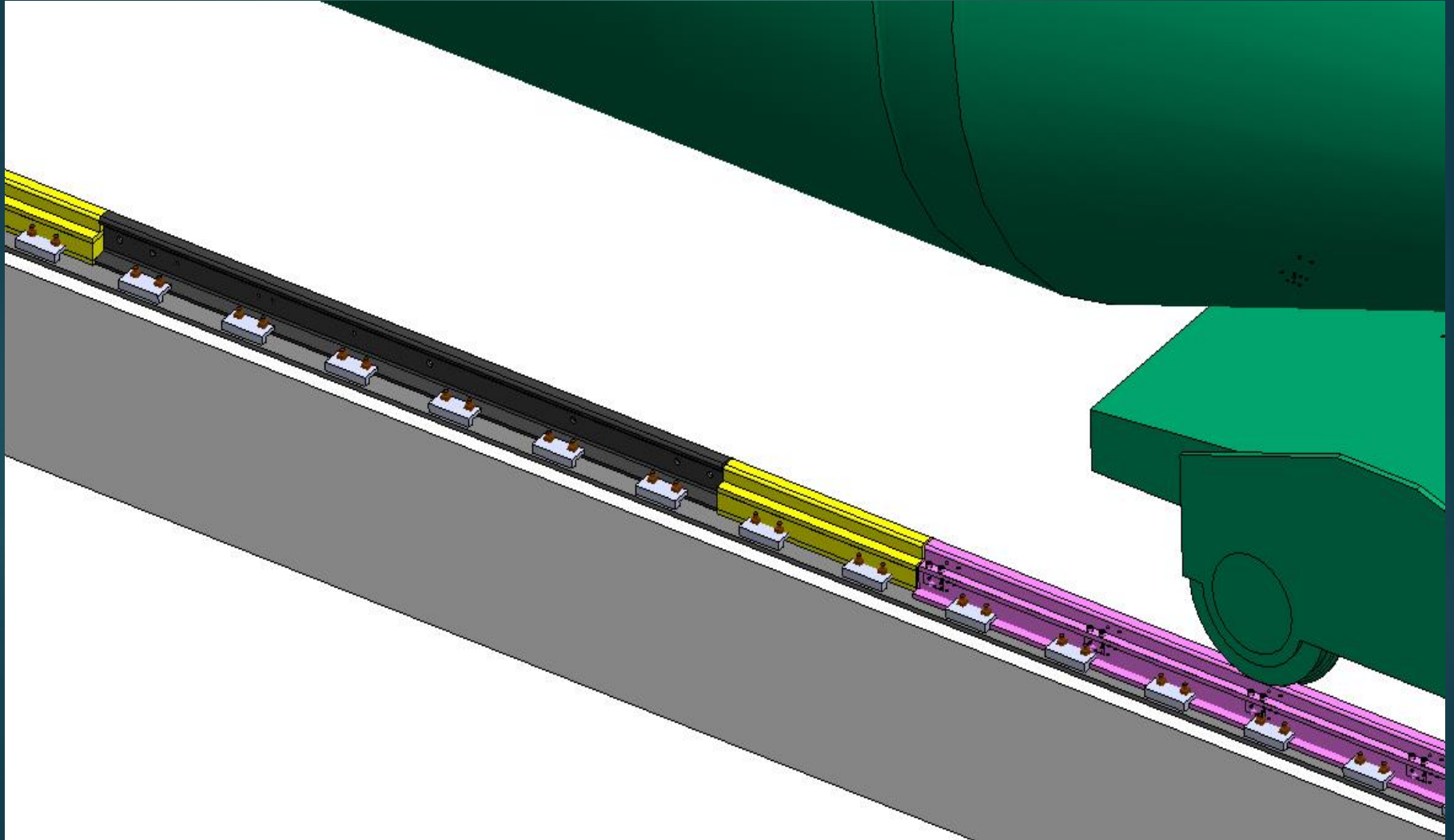
The sensors can be in Linked one to one Via a link which can be connected to the Digital load indicator .

The loadcells are temperature compensated to work even at the High temperature of 180 degree .

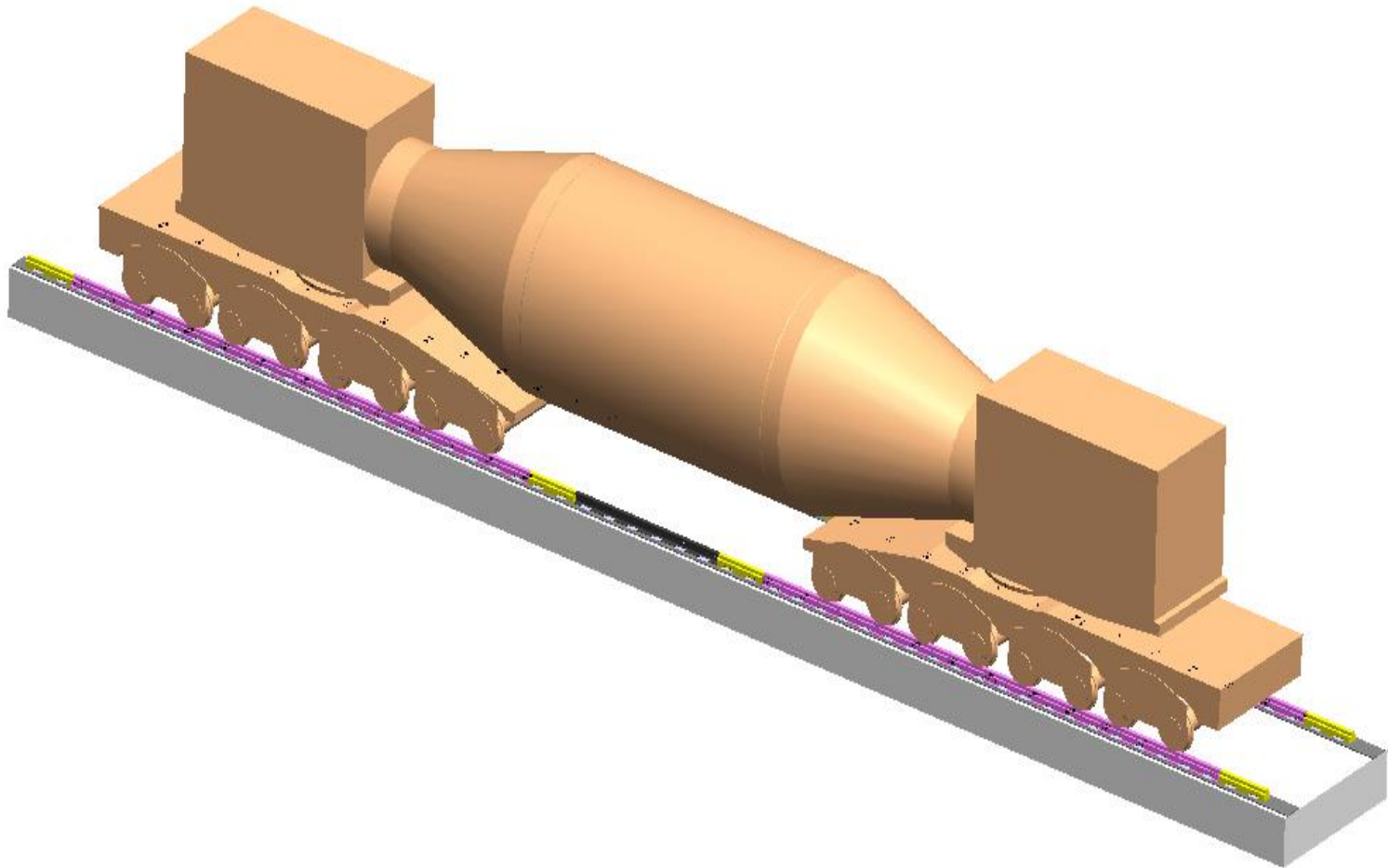
LAYOUT FOR 380 TON AND 350 TON



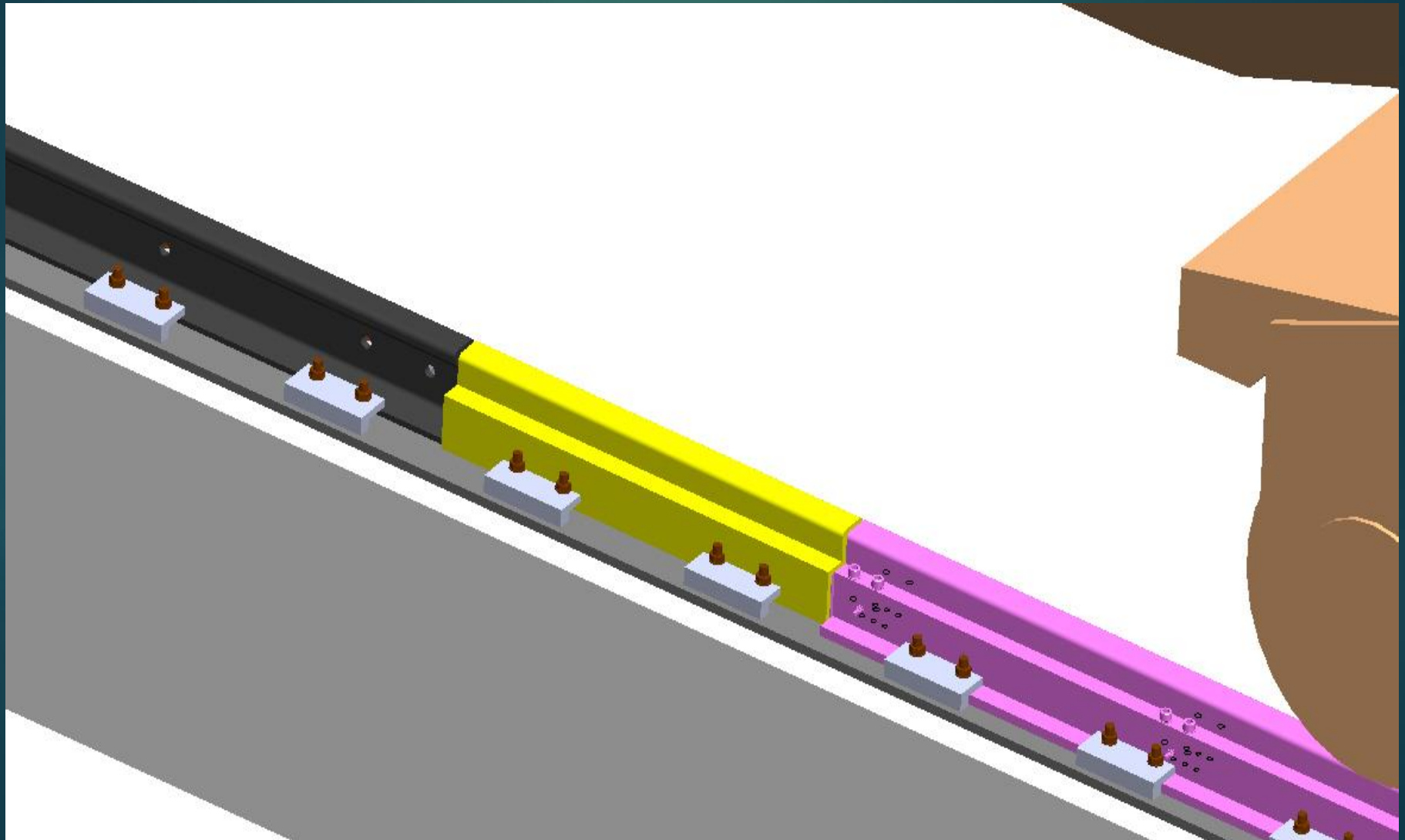
DUMMY BETWEEN THE BOGIE



ISOMETRIC VIEW OF 350 TON



RAIL APPROACH



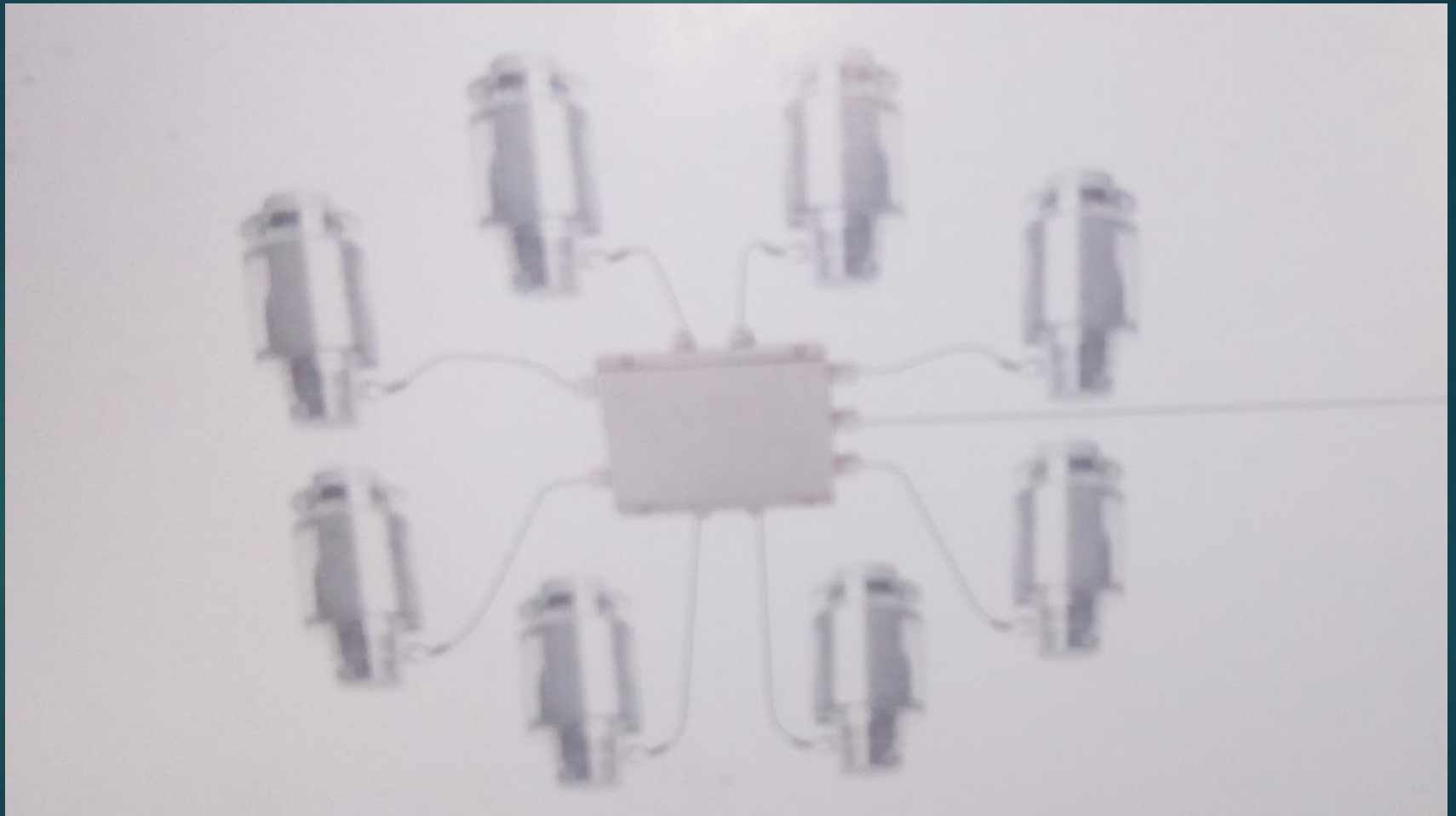
SYSTEM FEATURES

- Digital loadcell .
- Long rail sensors with the R60 rail gauge .
- Longer the rail safety is increased and placement is not an issue .
- Digital weight indicator to make the loadcell fault deduction on line and loadcell calibration on digital protocol .
- High temperature cable and loadcell .
- Joint less cable connection .
- Junction box can be totally eliminated so that the maintenance can be easy and trouble free .

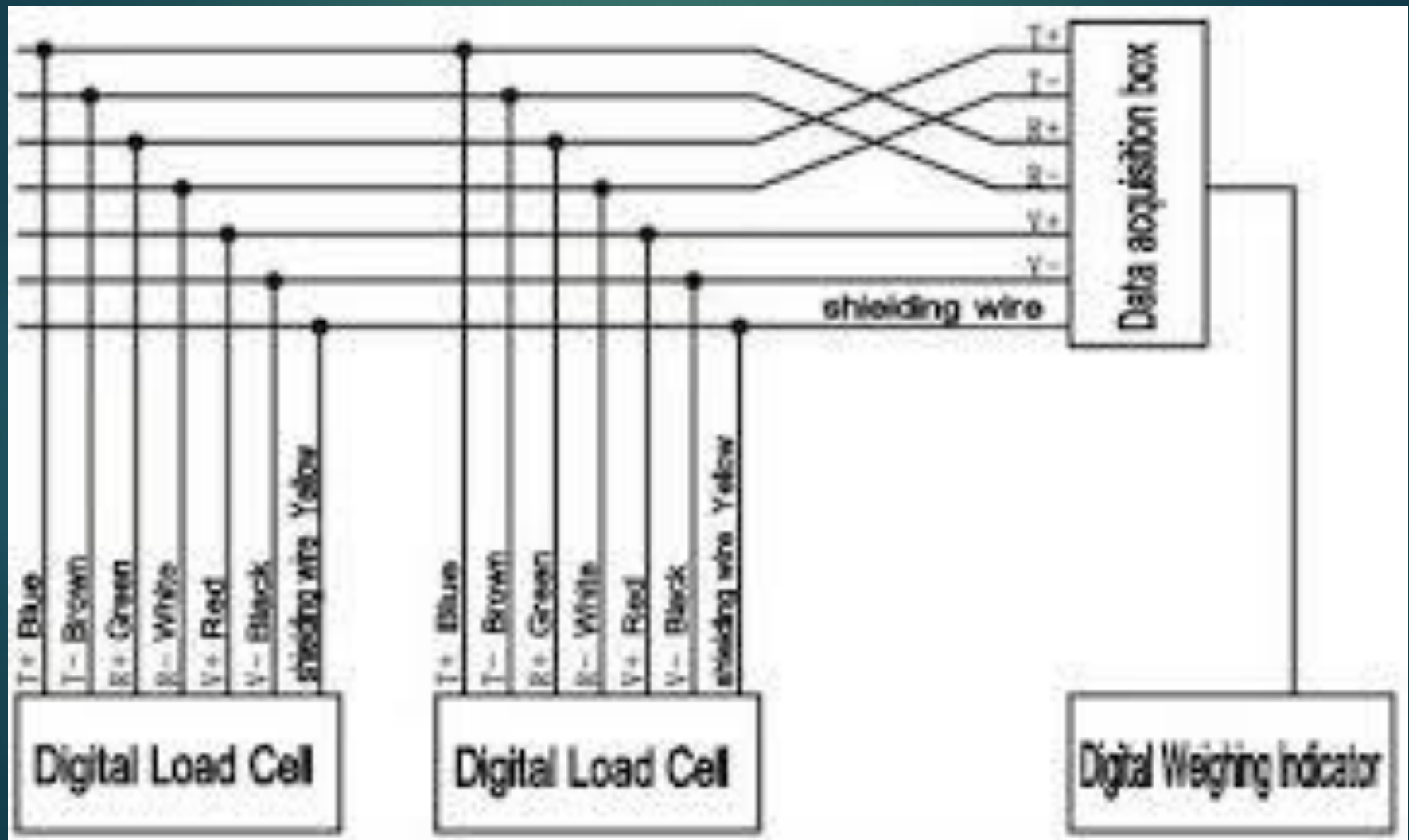
NEW REQUIREMENT

- The System should weighing both the 380 and 350 ton Torpedo ladle car .
- The system should have comfortable weigh Zone of at least 10mts on either side so that the Difference in Torpedoes dimension can be accommodated .
- System should have Digital loadcell , high Temperature and on line fault deduction system so that any one of the loadcell problem can be deducted and by passed .
- Complete torpedo loading and drop in weighing application has to be developed and it should be proven source .
- The Rail sensor should have small piece , must have minimum length of 5000mm.

ANALOG LOAD CELL CONNECTION



DIGITAL LOAD CELL CONNECTION



SENLOGIC

THE VIBRANT VALIDATION

THANK YOU

#52, Pudupedu Village
Nandampakkam (post),
Chennai- 600069
India.

Phone : +91 44 27142100(100lines)
senlogicindia.net